

January 4, 2008 (corrected 1/18/08)

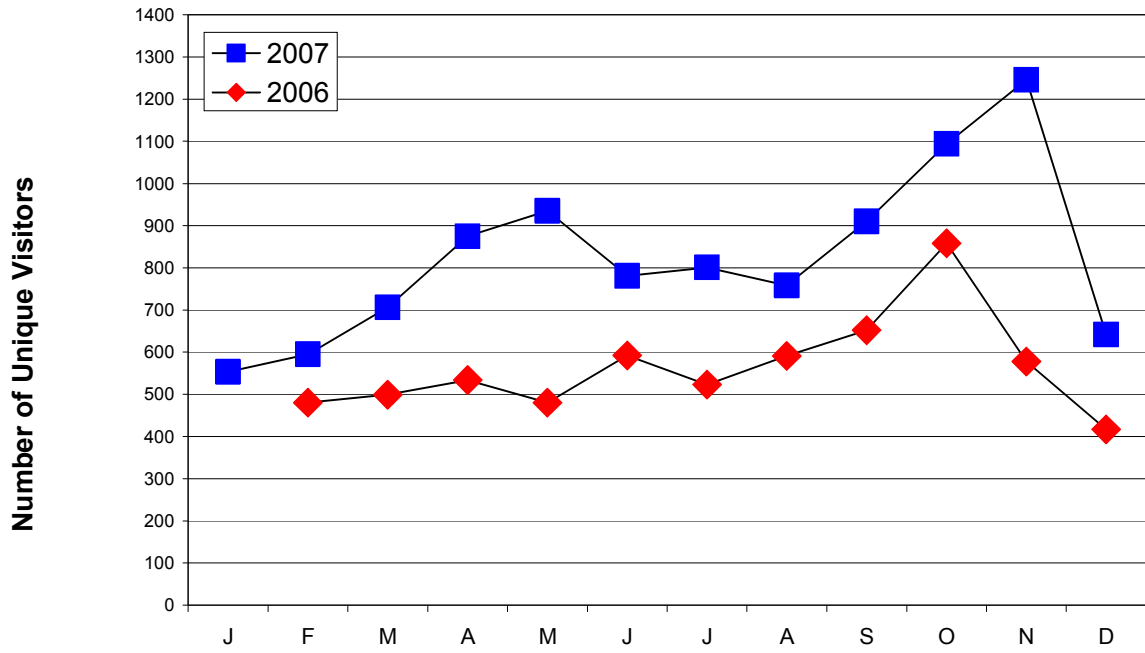
Report for ECW Board

Submitted by: Sally Sinclair sally@sinclairservices.net webmaster@alabamaecw.org

Website www.alabamaecw.org

1. Website continuing to get good viewership.
2. After Fall Conference presentation, more parishes started sending info to be posted to website (events and marketplace items). But need Parish Events for 2008.
3. I have received no updates since Spring 07 for the ACTS2 Thermometer on our website and ECW progress towards our goal.
4. Convocation Coordinators: Please tell the parishes in your convocation about the website. Encourage them to send info to me for parish events, fundraisers, photographs, items for sale, etc. Also, please remind parish ECW leaders of the Parish Checklist (www.alabamaecw.org/ParishChecklist.htm) which can help them do their job.
5. Recommendation: **Put the website address on every ECW correspondence** you write (paper and email). Tell your parishes to list it their parish newsletters and Parish ECW handouts.
6. I am trying to come up with a effective and efficient visual way to move new website viewers to each Convocation page that lists all parishes in that convocation. I have always worried about whether people could find that page and have had feedback that it was not readily noticed. So on home page, I added a small map of Diocese that shows the 7 convocations and below it asks "Which Convocation do you belong to?" which is clickable to Convocation page. From there they can click on their convocation and then see the parish listings. I would appreciate any feedback on this new method and/or any ideas you have to help with this process.
7. I have set up new email addresses for president@alabamaecw.org, preselect@alabamaecw.org, secretary@alabamaecw.org, correspondence@alabamaecw.org, treasurer@alabamaecw.org, events@alabamaecw.org, publicity@alabamaecw.org, uto@alabamaecw.org, webmaster@alabamaecw.org, and for the convocation coordinators: birmingham@alabamaecw.org, blackbelt@alabamaecw.org, cheaha@alabamaecw.org, eastala@alabamaecw.org, Montgomery@alabamaecw.org, mountain@alabamaecw.org, and tennvalley@alabamaecw.org. I have set up some of these to forward on to each individual's regular email address but have not finished this process and verified that it is all working. Once this is done, I will then set up the master forwarding from ecwboard@alabamaecw.org to all the above and other email addresses of rest of board. Each of those with an @alabamaecw.org email address should remember to use this email address when they are corresponding by email and listing their contact info anywhere. Also, if your email address changes, please let me know so I can change the forwarding.
8. The Birmingham convocation has an email address (birmingham@alabamaecw.org) but at this point, I do not know who should be forwarded any emails that might come. I recommend designating someone as the "email liaison" for that purpose.
9. The 2008 Calendar/Handbook is now downloadable from the website and the Calendar has been updated with 2008 events. Still to come is the fully electronic method of submitting this form.
10. I have not updated the rest of the website with any changes/updates that need to be made based on what is in the printed 2008 Calendar/Handbook. Once again, I need help with this since there are so many pages on the website. If each committee chair (UTO, CPC, Scholarships, etc.) could check their webpage against what is printed in the Calendar/Handbook and let me know what needs updating on their page, that will help me greatly. Also each Convocation Coordinator needs to check their Convocation page and make sure their list of parishes is up to date.
11. If you want any of your reports to the ECW board on the Reports webpage (<http://www.alabamaecw.org/BoardReports.htm>), you need to send them to me electronically.
12. Convocation Coordinators – please send me the date and any other info you want posted for your spring convocation meetings.
13. I apologize for being behind in all I have promised but had a very good Fall with my work that kept me very busy. My depression has been less this winter than last few years and I am thankful for all your prayers.

Reminder: Make a document readable by just about anybody on any computer, by putting it into PDF format free by going to <http://www.pdfonline.com>.



	J	F	M	A	M	J	J	A	S	O	N	D
■ 2007	553	595	706	875	935	781	801	758	910	1094	1246	642
◆ 2006		480	499	534	480	592	523	591	652	858	578	417

February 2006 - December 2007

Website page view statistics

Month	Unique visitors	Number of visits	Pages	Hits	Bandwidth	Comments
Jan 2006 (partial month)	219	287	930	2418	17.31 MB	
Feb 2006	480	701	1892	5323	146.66 MB	Diocesan Convention
Mar 2006	499	716	1746	5135	132.83 MB	
Apr 2006	534	840	2864	7538	90.25 MB	
May 2006	480	690	2612	6591	58.34 MB	
Jun 2006	592	847	2535	7849	85.06 MB	Alleen blogged at Nat'l Convention
Jul 2006	523	735	2654	6370	91.32 MB	
Aug 2006	591	849	3169	7436	100.72 MB	
Sep 2006	652	948	3999	9039	123.41 MB	
Oct 2006	858	1255	5375	14545	154.75 MB	Fall Conference
Nov 2006	578	918	2921	8659	126.28 MB	
Dec 2006	454	729	2687	7182	94.75 MB	
Total 2006	6460	9515	33384	88085	1.19 GB	
Jan 2007	553	881	5676	11409	136.83 MB	
Feb 2007	595	975	6426	12401	207.71 MB	Diocesan Convention
Mar 2007	706	1178	4238	9992	175.69 MB	
Apr 2007	875	1302	3979	11296	158.24 MB	
May 2007	935	1421	3618	9591	231.01 MB	
Jun 2007	781	1089	3219	8013	231.24 MB	
Jul 2007	801	1054	3028	7770	191.23 MB	
Aug 2007	758	1137	4300	9488	195.35 MB	
Sep 2007	910	1388	7426	14508	263.23 MB	
Oct 2007	1094	1717	6137	14585	312.96 MB	Fall Conference
Nov 2007	1246	3085	8295	17561	380.29 MB	
Dec 2007	642	908	4576	8867	204.51 MB	
Total 2007	9896	16135	60918	135481	2.63 GB	